



# Smart Mobility

Smart Solutions for More Connected and Accessible Cities.

## THE CHALLENGE

Solutions for managing urban mobility amid new complexities, rising expectations, and limited resources. Local administrations are tasked with managing a complex system where often conflicting needs coexist: on one hand, the need to reduce traffic, emissions, and congestion; on the other, the demand for flexibility, accessibility, and simplicity from citizens, commuters, and city users.

All within operational contexts often marked by several critical issues:

- Processes that are still highly manual or inconsistent, slowing down operations and hindering efficiency—for example, in permit management, on-street control, parking demand analysis, and occupancy monitoring.
- Lack of unified oversight and non-integrated data: information on parking, ZTL access, revenue, occupancy, and enforcement is often spread across different, non-communicating systems, making it difficult to obtain a unified view of urban mobility.
- Difficulty in enforcing rules due to ineffective controls, lack of interoperability, and tools not aligned with current digital standards.
- Increasing regulatory and political pressure toward sustainable mobility models, based on multimodal accessibility and restrictions on private traffic.
- Growing demand for digitalization from citizens, who expect simple interfaces, integrated services accessible via mobile, and the ability to access urban mobility in a straightforward and transparent way.
- Resource shortages in terms of personnel, digital skills, and investment capacity.

In this scenario, solutions that simplify daily management, improve operational control, and provide planning tools based on reliable and up-to-date data become essential.

# THE SOLUTION

A digital ecosystem to simplify, integrate, and enhance urban mobility management.

Municipia supports local administrations in rethinking mobility through a digital lens. It does so with an integrated suite of technological solutions and operational services, capable of connecting processes, data, and users into a single vision. Each solution is designed to meet the real needs of cities and can be activated within a modular and scalable framework.

## INES CLOUD

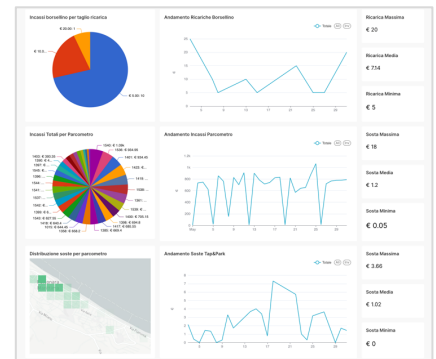
Managing urban mobility today requires tools that can overcome process and data fragmentation, simplify services for operators and citizens, and offer concrete support for public decision-making.

INES Cloud is the proprietary platform, ACN-qualified, for integrated management of private mobility and parking, both on-street and in facilities. Used by cities of all sizes, it offers a wide range of functionalities that can be activated modularly and gradually.

Among the most common features is the digitalization of permit and authorization issuance—for LTZ gates, regulated parking, and special access—which automates the entire lifecycle: from request to renewal. Advanced AI-based tools simplify operator tasks and improve the experience for citizens and businesses.

Another feature involves monitoring on-street parking space occupancy through integration with leading market sensors. This data powers real-time infoparking services and advanced parking demand analysis.

INES Cloud's strength lies in its ability to integrate data from heterogeneous sources—revenue from parking meters, payment stations and apps, permits from physical and digital counters, violations from handheld devices and scan cars, occupancy data from sensors—returning them in a single operational view with customizable dashboards, graphics, tables, and georeferenced maps. This enables administrations to simplify daily operations, manage mobility in an integrated, transparent, and data-driven way, and set dynamic and flexible policies based on real data.



## TAP&PARK

**Tap&Park** is the mobile app that allows cities to offer an institutional, secure, and customized digital parking service, with no additional costs for users. Fully brandable with the city's name, logo, and colors, Tap&Park complements existing commercial apps in the area and offers the advantage of being directly managed by the public administration, including the definition of discounts, benefits, and rates.

For users, the experience is simple and seamless: they pay only for the actual parking time, can extend minutes remotely, receive notifications, check rates and availability in real time, and manage daily permits and subscriptions independently—all without any extra fees beyond the parking cost.

For the administration, it is a direct and efficient digital channel that reduces management costs, limits cash usage, and provides valuable data to monitor demand, regulate pricing policies, and plan services in an integrated way.

## SANZIONI SMART

Sanzioni Smart is the street enforcement app designed to make enforcement activities more efficient, transparent, and digitalized. Thanks to real-time connection with payment and permit systems, it allows operators to verify vehicle compliance, detect violations, and immediately initiate the sanctioning process—all from a single mobile device.

The solution is natively integrated with the main sanction cycle management systems, ensuring operational continuity, traceability, and greater effectiveness throughout the entire sanctioning process. It also supports automatic license plate reading technologies (scan car and trailing fines), enhancing territorial coverage and optimizing staff deployment on the ground.

## MUV CLOUD

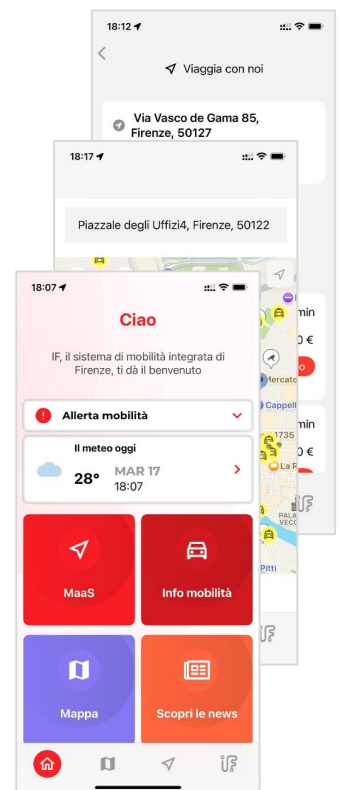
The mobility experience for users must be increasingly simple, accessible, and integrated.

MUV Cloud is Municipia's platform for building Mobility as a Service (MaaS) digital ecosystems at the municipal or metropolitan level, integrating all mobility services available in the area into a single digital environment.

MUV Cloud enables cities to offer a public MaaS service, branded and tailored to their own rules and public policies, alongside commercial MaaS apps. This way, administrations retain full control over generated data, active integrations, and service evolution.

The app allows users to plan intermodal routes, access public transport, parking, sharing services, micromobility, gates and ZTLs, book, pay, use sustainable mobility incentives—all through an intuitive and customizable interface.

MUV Cloud is designed to be interoperable with major local mobility and transport systems, in compliance with guidelines from the Ministry of Infrastructure and Transport and European MaaS directives. For administrations, it is a strategic tool for managing urban mobility: it simplifies access to services, promotes responsible choices, and enables the collection and analysis of essential data for planning and evaluating public policies.



# THE ADVANTAGES

## **Managing mobility with greater efficiency, more data, and enhanced adaptability.**

Municipia's solutions enable cities to tackle the complexity of urban mobility with concrete, integrated, and results-oriented tools. By digitalizing processes, integrating data, and improving user experience, administrations can achieve tangible benefits quickly.

### + **Greater operational efficiency**

Automating repetitive tasks and reducing fragmentation between systems saves time, prevents errors, and optimizes internal resources.

### + **More control, less dispersion**

With an integrated view of data on revenues, fines, permits, and occupancy, it becomes possible to monitor service performance in real time and over specific periods, identify critical issues, and make timely, informed decisions. Thanks to geolocated data, targeted investigations can be conducted in specific geographic areas, such as particular streets or zones.

### + **Data to support strategic planning**

Clearly presented information allows for measuring the impact of mobility policies, highlighting issues, and responding quickly.

### + **Modern and consistent user experience**

Easy-to-use digital services accessible via mobile increase user satisfaction and reduce the need for physical counters and assistance.

### + **Improved effectiveness of street enforcement**

Digital tools for operators simplify checks, make sanctioning faster and more accurate, and enhance the entire enforcement cycle.

### + **A solid foundation for building MaaS ecosystems**

Municipia's solutions are already designed to support integrated and intermodal mobility models, giving cities the opportunity to evolve toward user-centered territorial MaaS systems.



[www.municipia.eng.it](http://www.municipia.eng.it)



[@Municipia\\_SpA](https://twitter.com/Municipia_SpA)



[Municipia SpA](https://www.linkedin.com/company/municipia)



[Municipia SpA](https://www.facebook.com/MunicipiaSpA)